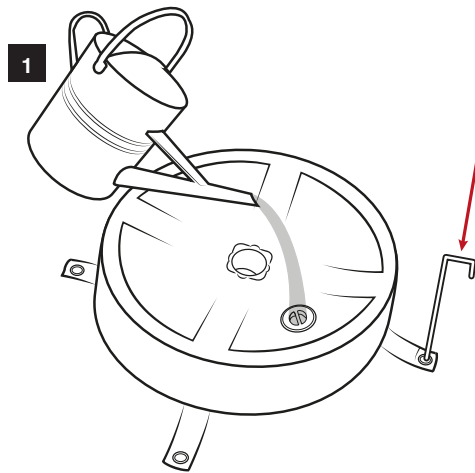
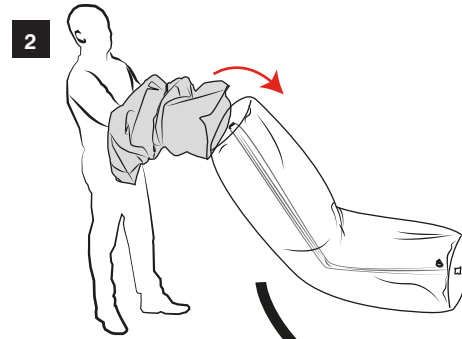


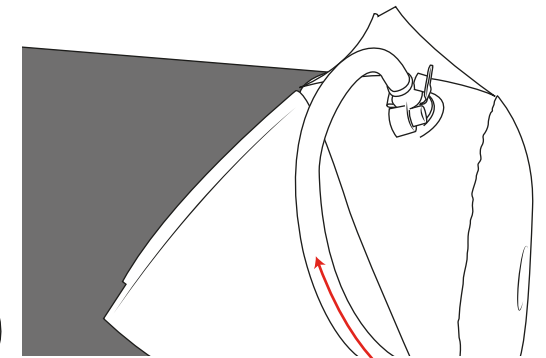
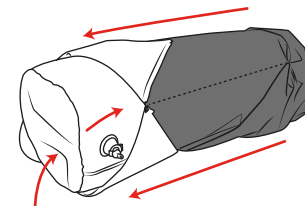
# Outdoor Totem Gonfiabile



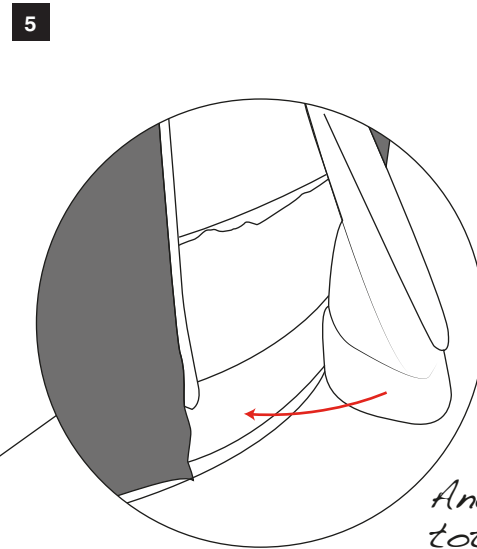
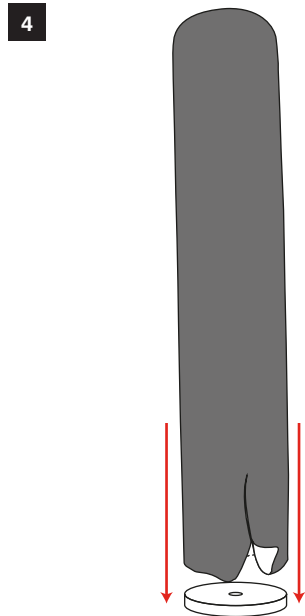
Riempi con 113L di acqua o sabbia la base. Inserisci i picchetti se necessari.



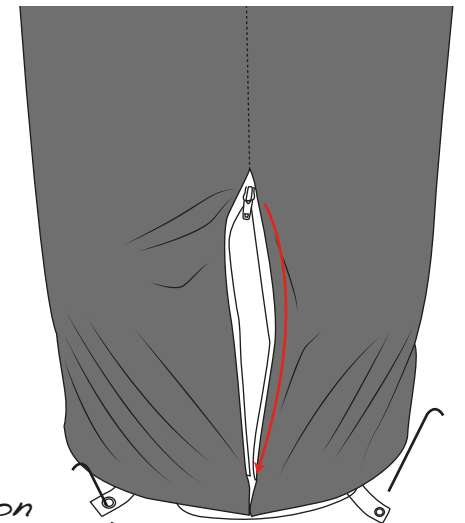
3  
Infila la grafica nella sezione gonfiabile



Gonfia il totem



Ancora il totem al terreno con i picchetti



NOTA IMPORTANTE: Durante l'uso di questo prodotto occorre prestare attenzione perché temperature estreme possono causare lo sgonfiamento del totem.

Disclaimer: We are continually improving and modifying our product range and reserve the right to vary the specifications without prior notice. All dimensions and weights quoted are approximate

**Assemblaggio**